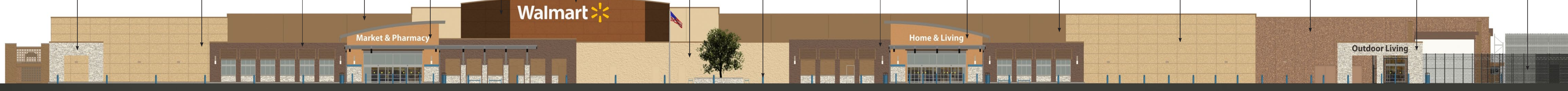


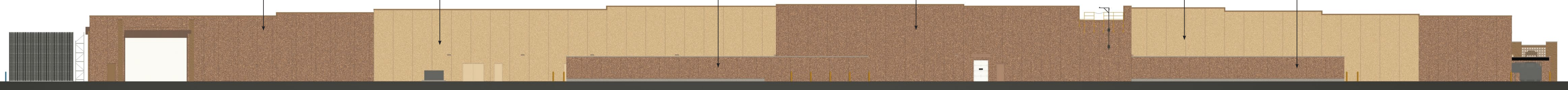


- Integral Color Split-face CMU "Madison" by Oldcastle
- Pre-cast concrete Fabcon "Gray Cloud" #1013
- Split-face CMU ptd. "Cobble Brown" SW #6082
- EIFS ptd. "Rookwood Clay" SW #2823
- EIFS ptd. "Oak Creek" SW #7718
- Trespa Meteor "Dark Brown"
- Trespa Meteor "Center"
- Split-face CMU ptd. "Row House Tan" SW #7689
- Illuminated Entry Bollard
- Split-face CMU ptd. "Cobble Brown" SW #6082
- EIFS ptd. "Oak Creek" SW #7718
- EIFS ptd. "Rookwood Clay" SW #2823
- Pre-cast concrete Fabcon "Gray Cloud" #1013
- Pre-cast concrete Fabcon "Bryan" #1070
- Integral Color Split-face CMU "Madison" by Oldcastle
- Vinyl coated fencing "Black"



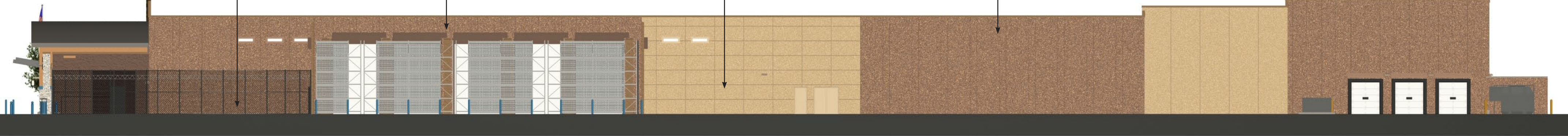
FRONT ELEVATION

- Pre-cast concrete Fabcon "Bryan" #1070
- Pre-cast concrete Fabcon "Gray Cloud" #1013
- Truckwell Screenwall Pre-cast concrete Fabcon "Bryan" #1070
- Pre-cast concrete Fabcon "Bryan" #1070
- Pre-cast concrete Fabcon "Gray Cloud" #1013
- Truckwell Screenwall Pre-cast concrete Fabcon "Bryan" #1070



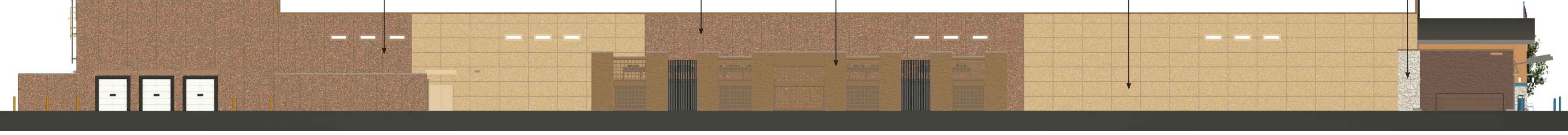
REAR ELEVATION

- Vinyl coated fencing "Black"
- Pre-cast concrete Fabcon "Bryan" #1070
- Pre-cast concrete Fabcon "Gray Cloud" #1013
- Pre-cast concrete Fabcon "Bryan" #1070



RIGHT ELEVATION

- Pre-cast concrete Fabcon "Bryan" #1070
- Pre-cast concrete Fabcon "Bryan" #1070
- Split-face CMU ptd. "Rookwood Clay" SW #2823
- Pre-cast concrete Fabcon "Gray Cloud" #1013
- Integral Color Split-face CMU "Madison" by Oldcastle



LEFT ELEVATION



Scott & Goble Architects, P.C.

www.scottgoble.com
©2009, Scott & Goble Architects, P.C.

Oxford, Pennsylvania
#5795
May 27, 2009



approved by _____ date _____

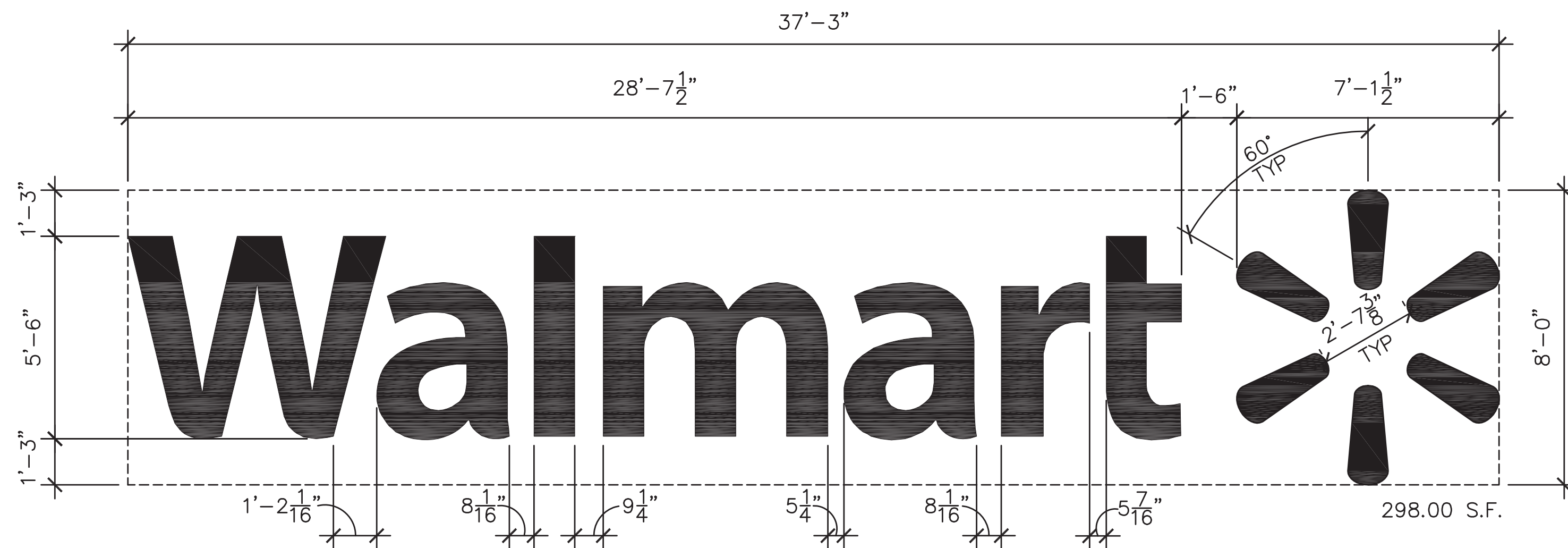
ILLUSTRATION ONLY: NOT FOR CONSTRUCTION



A022-SIGN
051009

SIGNAGE SCHEDULE

FRONT SIGNAGE	QTY	COLOR	INDIVIDUAL AREA	TOTAL AREA
Walmart * (spark)	1	WHITE YELLOW	298.00 SF	298.00 SF
Market & Pharmacy	1	WHITE	102.74 SF	102.74 SF
Home & Living	1	WHITE	72.59 SF	72.59 SF
Outdoor Living	1	BRONZE	77.31 SF	77.31 SF
TOTAL FRONT SIGNAGE				550.64 SF



Scott & Goble Architects, P.C.

www.scottgoble.com
©2009, Scott & Goble Architects, P.C.

Oxford, Pennsylvania
#5795
May 27, 2009



approved by _____ date _____

ILLUSTRATION ONLY: NOT FOR CONSTRUCTION